



**FPi 4700**



# FPI 4700

## Folder Inserter

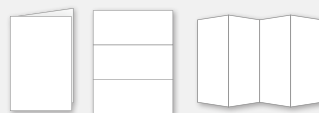
Load. Press Start. Done.

The FPI 4700 offers enhanced efficiency and robust security that stretches the value of your mailroom's folding and inserting processes. The FPI 4700 provides simple, quiet, and reliable mail production. Equipped with an easy-to-use touchscreen and a variety of features, the FPI 4700 is the perfect match for simple and complicated mailroom processes. Smart Feeders, document reading technology, and document feed detection, which measures the thickness and length of the media in each feeder will ensure the correct documents are inserted into the correct envelopes every time. Backed by powerful capabilities and a fully customizable job set-up, the FPI 4700 is perfect for applications such as variable paged invoices and statements, letters, notices, marketing materials, one or multi-page mailings, checks, and more.



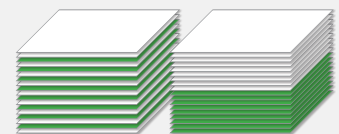
### Intuitive Display

Easy-to-use 7" full color, glass touchscreen lets you intuitively control all machine functions. Automatic job setup allows you to program a job in 30 seconds, without the need for trial pieces.



### Knife Fold Technology

This powerful, quiet, knife folding technology is capable of simultaneously folding up to 10 sheets of paper in half. There are 5 different fold types available: C, Z, V, Double-V and No-Fold.



### Versatile and Efficient

Accumulates, collates and aligns before folding, and adapts to fit a changing workload. Customizable feeders allow the processing of documents that need folding, and inserts that do not.

## Add-ons

### Optional Document Processing Solutions



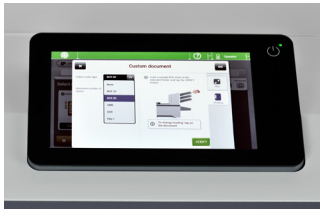
#### High Capacity Vertical Stacker or Side Exit Catch Tray

The High Capacity Vertical Stacker (shown on left page) stacks up to 500 finished envelopes. The Large Capacity side exit catch tray provides easy access to finished mail.



#### MaxiFeeder

The MaxiFeeder holds 325 Reply Envelopes and up to 1,200 sheets of paper or inserts. Enabling the FPi 4700 to take on your biggest jobs with minimal employee interaction.



#### Scancode Reading Options:

One hardware device reads all code types including custom codes. 1D linear barcode (BCR), 2D barcodes (Data Matrix, QR, others), Optical Mark Recognition (OMR). No user settings are necessary when processing jobs with different code types or code print locations.



#### PostBase® pro DS Interface

Further automate your mailing process by interfacing a postage meter to a folder inserter. By interfacing an FPi folder inserter to the Postbase® pro or PostBase® pro DS, you can transform printed paper into folded, stuffed, sealed, weighed, metered, and stacked mail with little user intervention.

## FlexStream Software

### Document Enhancement Solution

FlexStream Software is a document automation solution that gives organizations control over their mailing process. With its unmatched versatility, FlexStream automates and simplifies business workflow. It ensures security and document integrity by adding scancodes that are read by the folder inserter. FlexStream allows the user to choose which documents to print and mail, and which to send electronically.

#### FlexStream key benefits:

- Add Scancodes for variable page processing, document integrity, and verification
- Automate processes, reduce labor time and saving money
- Organize, sort, group and enhance documents for printing
- Gain access to USPS® Automation postage rates and discounts
- Correct undeliverable addresses (reduce returned mail)
- Add variable and static marketing text, graphics, logos, QR codes or barcodes





## Features

---

- Automatic job setup
- Smart Feeders with tray notifications
- Feeder swap, linking, cascading
- Process multiple sized documents in a job
- Insert nesting
- Process stapled sets
- Collate sheets before folding
- Can process glossy, pre-folded, and perforated media
- Multi-Sheet Feeding up to 25 inserts
- Divert before folding
- 5 Fold Types (C, Z, V, Double-V, No-Fold)
- Clamshell" design for easy access
- Bottom addresses (with bottom flap envelopes)
- Piece counter per job
- Electro-mechanical double feed detector at each tray
- Envelope exit capacity up to 500 finished envelopes
- Load envelopes and media on-the-fly

## Custom Consoles

---

Custom Consoles are the perfect companion for any FP Folder Inserter. Designed to be convenient and ergonomic and provide superior support for heavy folding and inserting systems. These consoles increase the reliability and lifespan of the equipment and includes internal storage.



## Specifications

---

### Technical Data

Dimensions (approx.) (W x L x H)	20" x 29-50" x 28-31"
Feeder Stations	2 or 3
Processing speed (Maximum)	3,800 per hour
Folding capacity Max(20lb. paper)	10(single) or 8(C or Z)
Job memory capacity	50
Weight	175 lbs.
Noise emission in dB (REF: ISO 11202)	< 66dB

### Documents and Inserts

MaxiFeeder capacity	1,200
High capacity document feeder	725
Standard document feeder capacity	325
Length x Width	3.5" - 14" x 5.1" - 9.9"
Max thickness (Booklets)	1.0 mm

### Envelopes

Envelope hopper capacity	325 (load-on-the-fly)
Height x Width	3.5" - 6.38" x 6.3" - 9.7"
Exit capacity	up to 500

## Options

---

- 1D Linear Barcode Reading (BCR)
- 2D Barcode Reading (Data matrix, QR, others)
- Optical Mark Reading (OMR)
- Client specific barcode and OMR schemes
- FlexStream Software
- MaxiFeeder
- High Capacity Vertical Exit Stacker
- Side Exit Right-Hand or Left-Hand Catch Tray
- Basic Catch Tray
- Postage Machine Interface
- Custom Consoles

Learn more at: [www.fp-usa.com/fpi-4700](http://www.fp-usa.com/fpi-4700)

© 2022 FP Mailing Solutions. All Rights Reserved. TM, SM and ® denote trademarks or registered trademarks of Francotyp-Postalia, Inc. The FP™ logo and FP™ Mailing Solutions Product logos are trademarks or registered trademarks of Francotyp-Postalia, Inc.